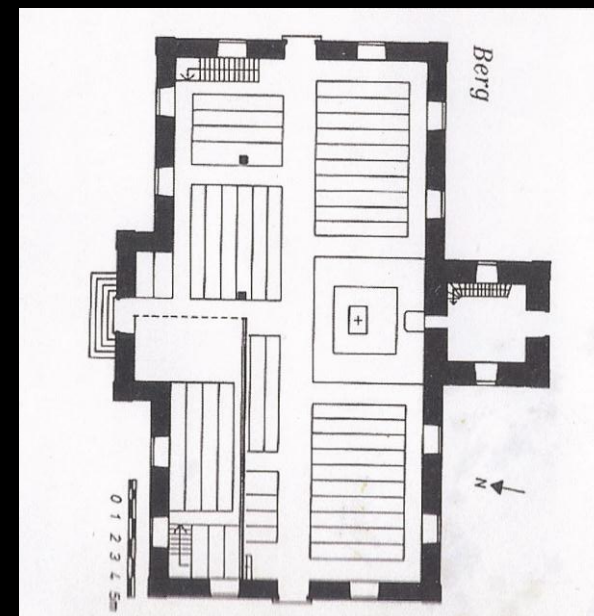


CREATION CONTEMPORAINE – LES TEMPLES PROTESTANTS

Journée d'étude Les édifices religieux du XXe siècle en Ile de France
Contribution de Nicolas Westphal 22 mai 2013

**Berg (Lorraine)
TEMPLE EPUdF
Architecte F.J. Stengel
XVIIIe siècle**









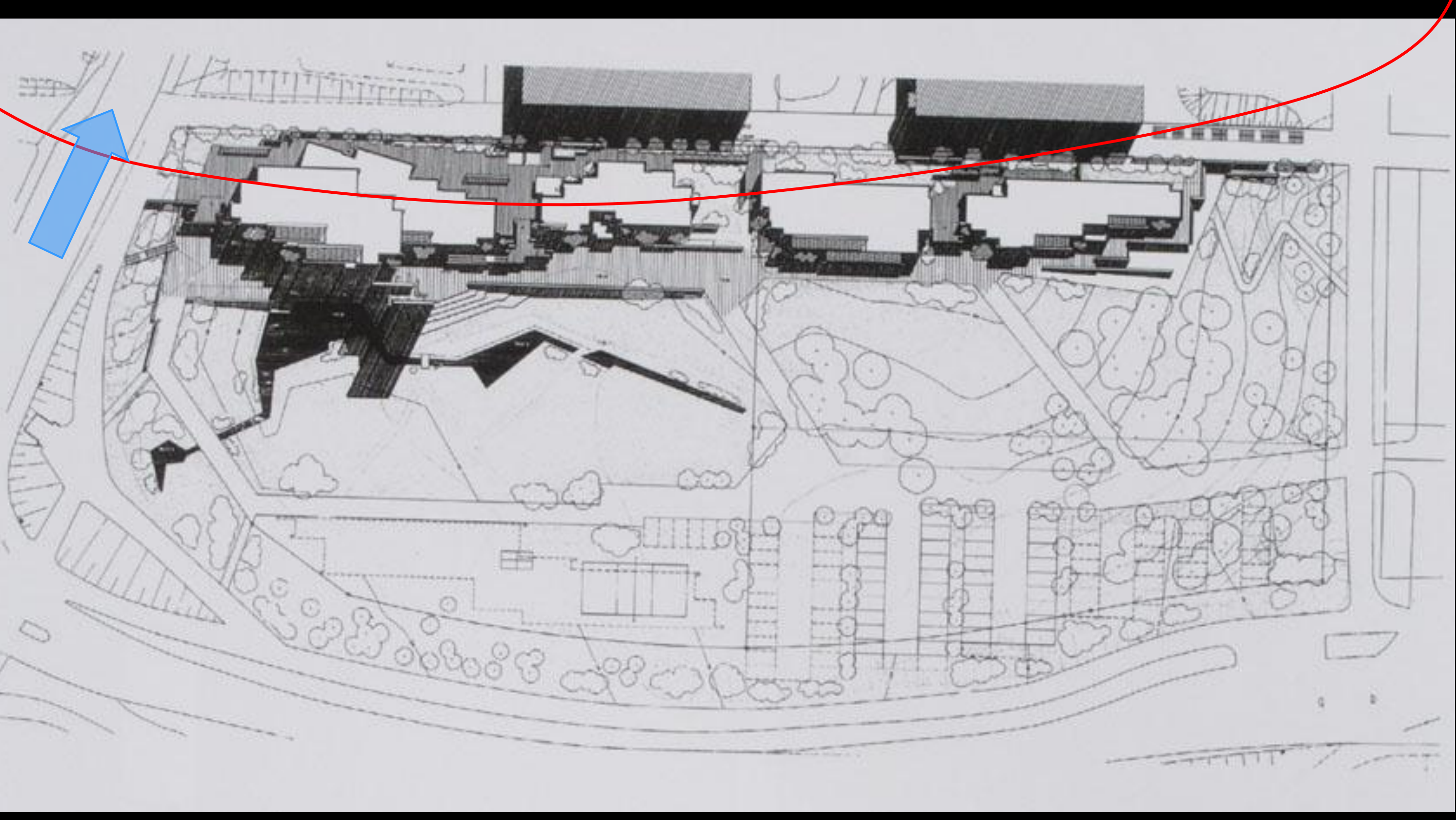






Männistö Kuopio
Eglise St Jean
Juha Leiviska architecte
1997

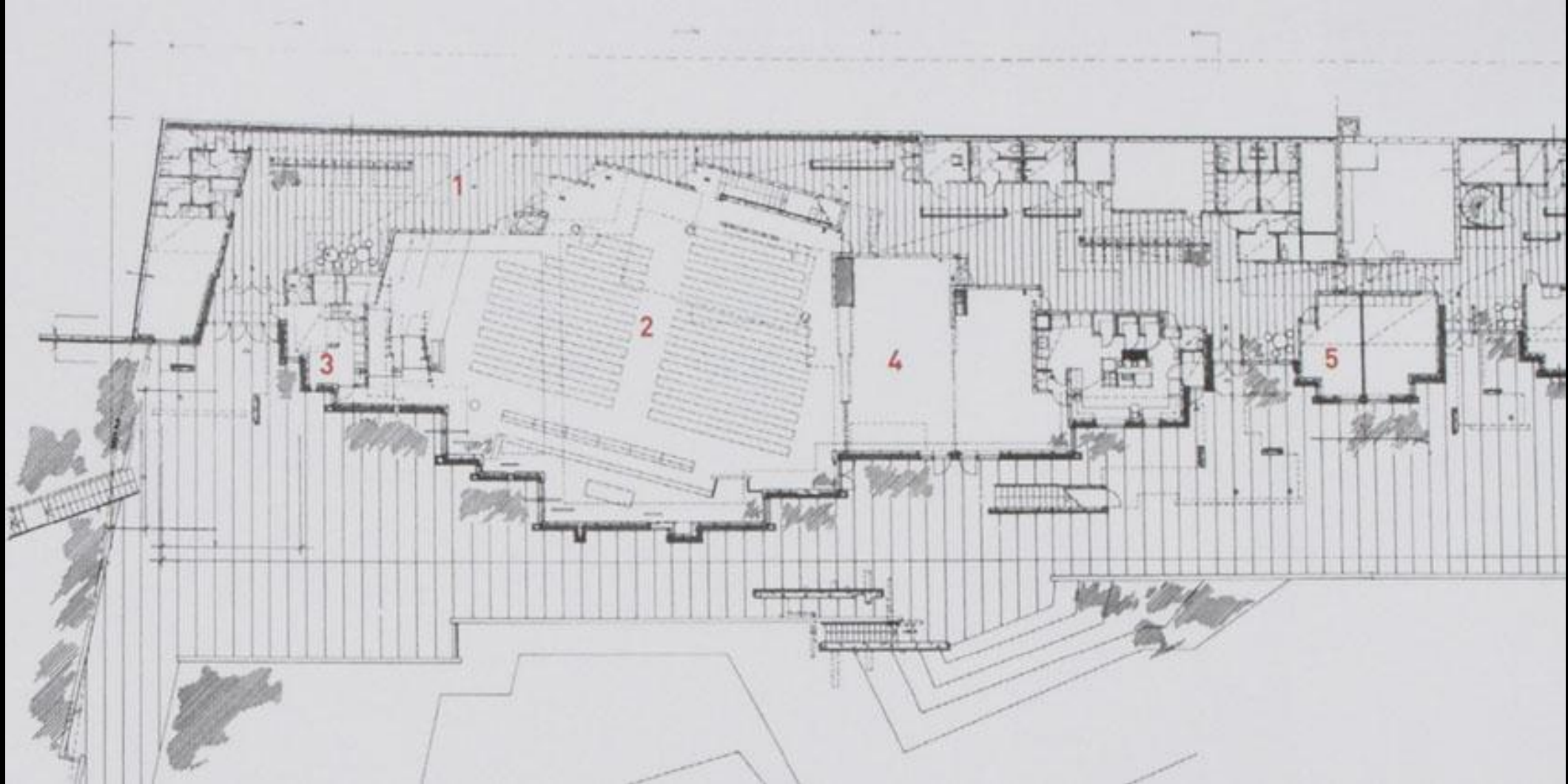


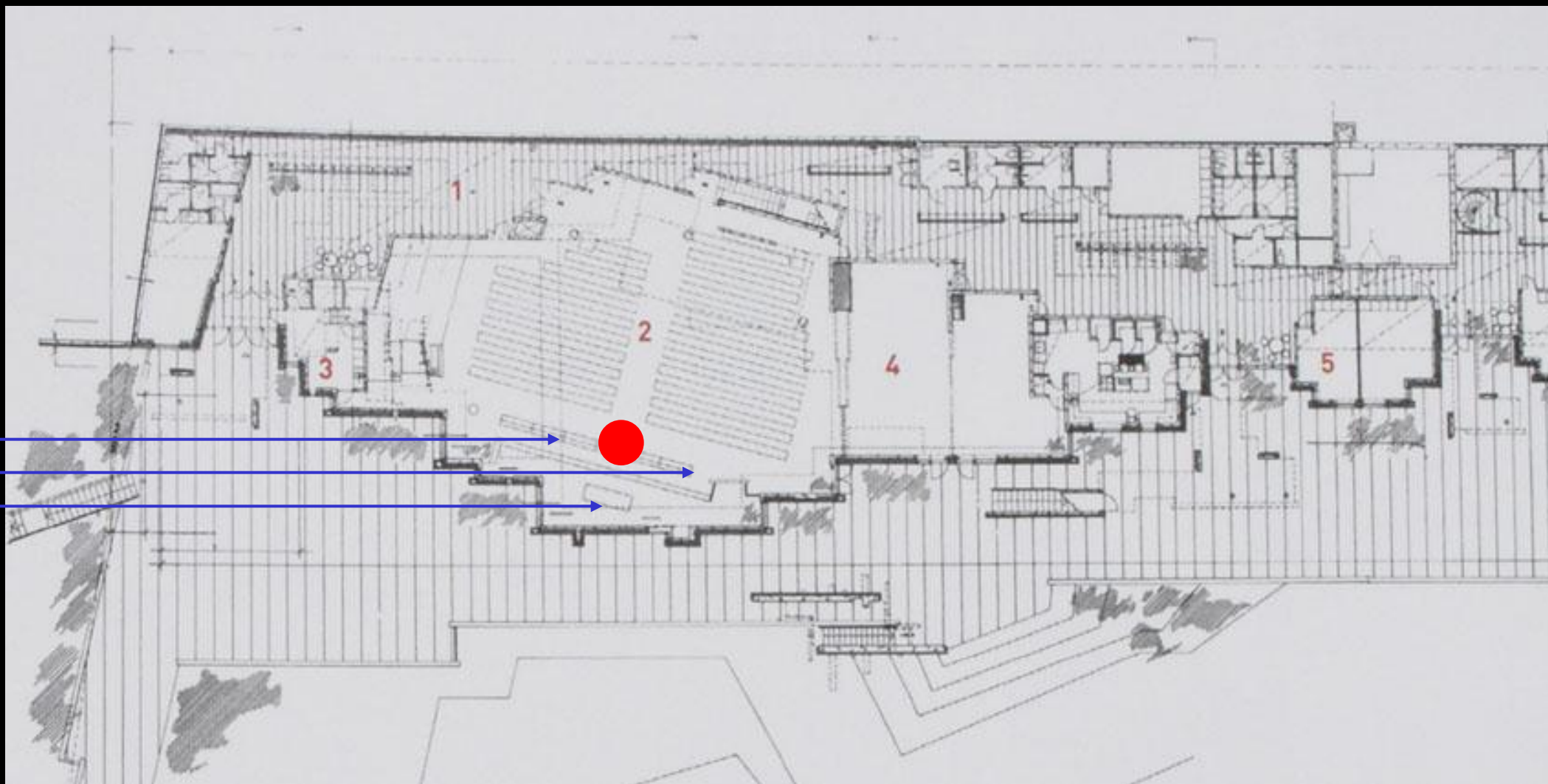






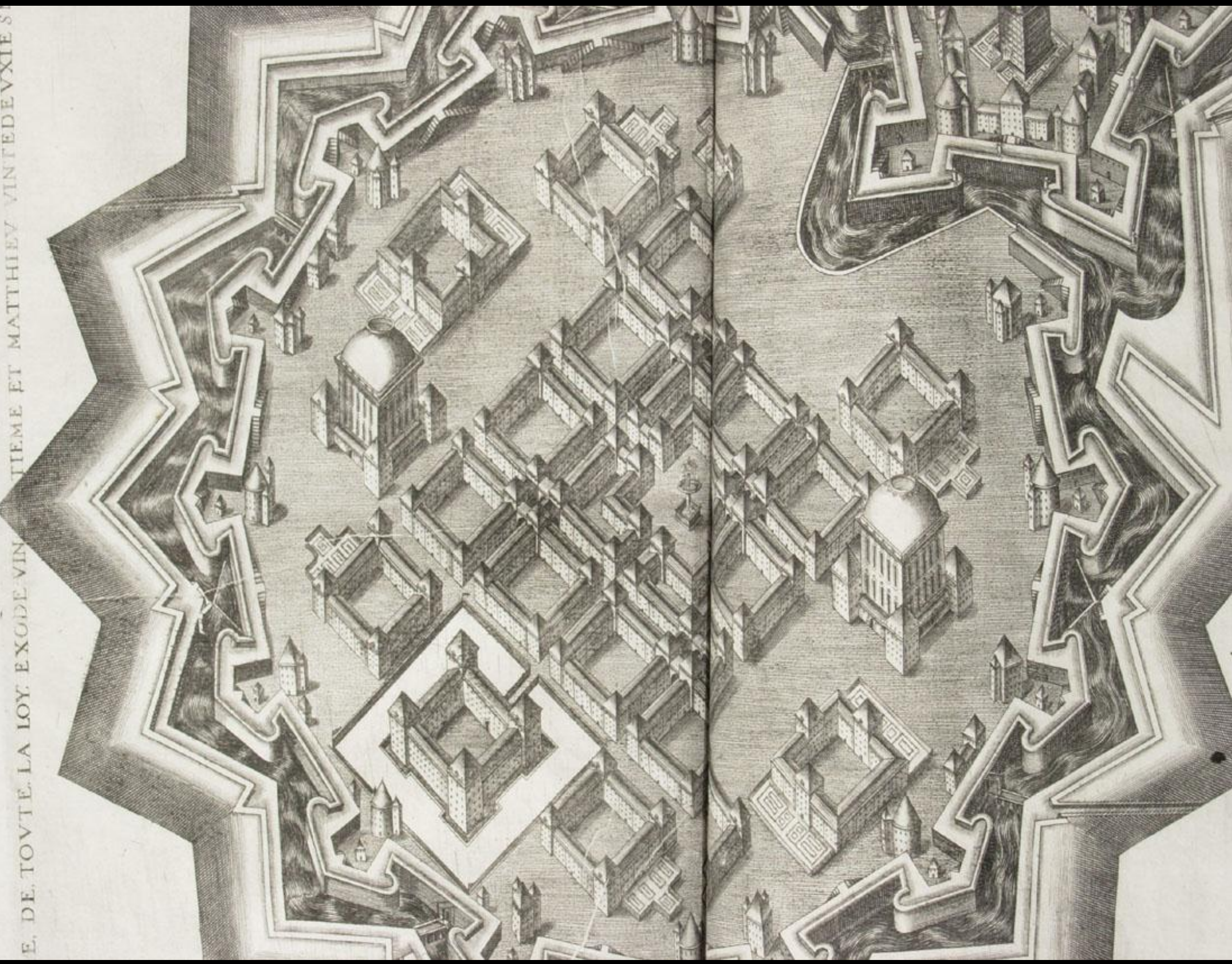


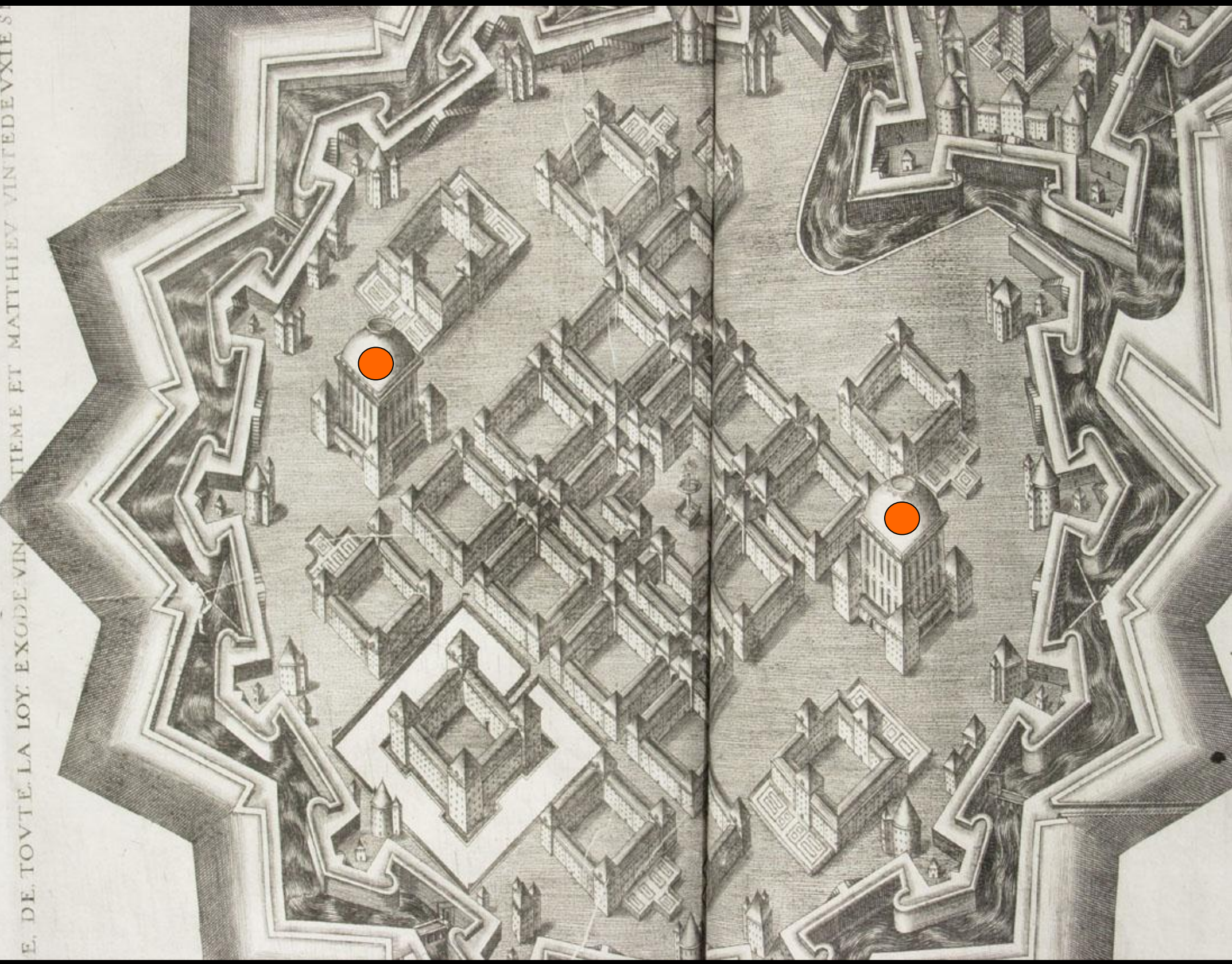


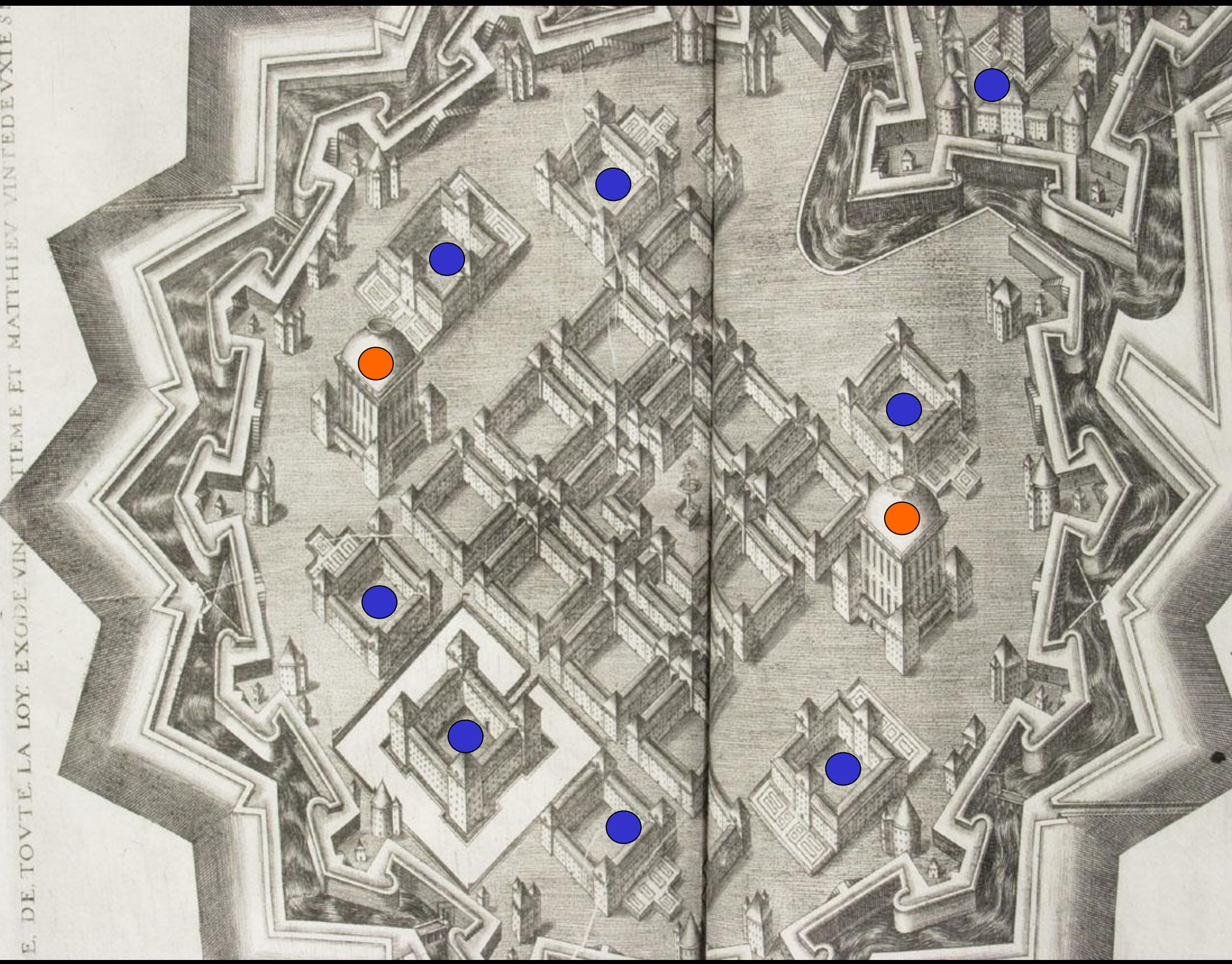


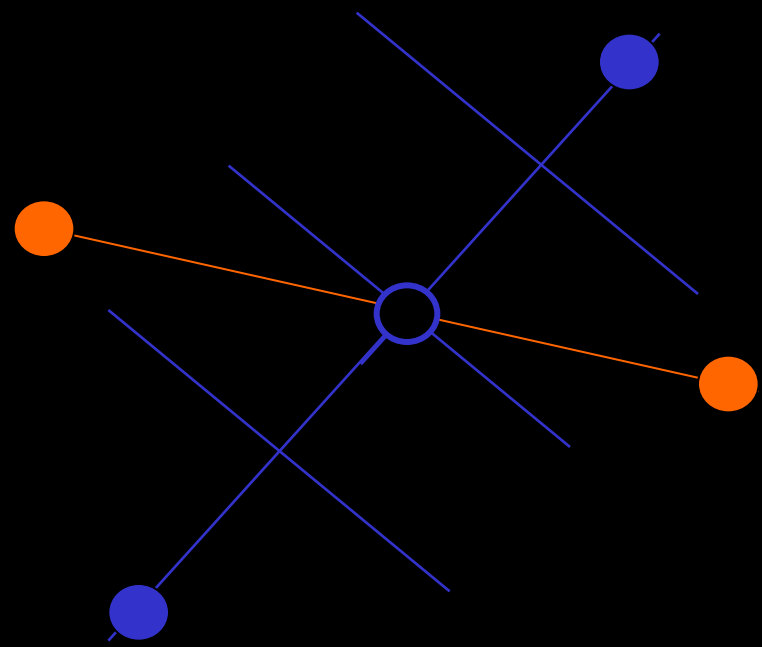


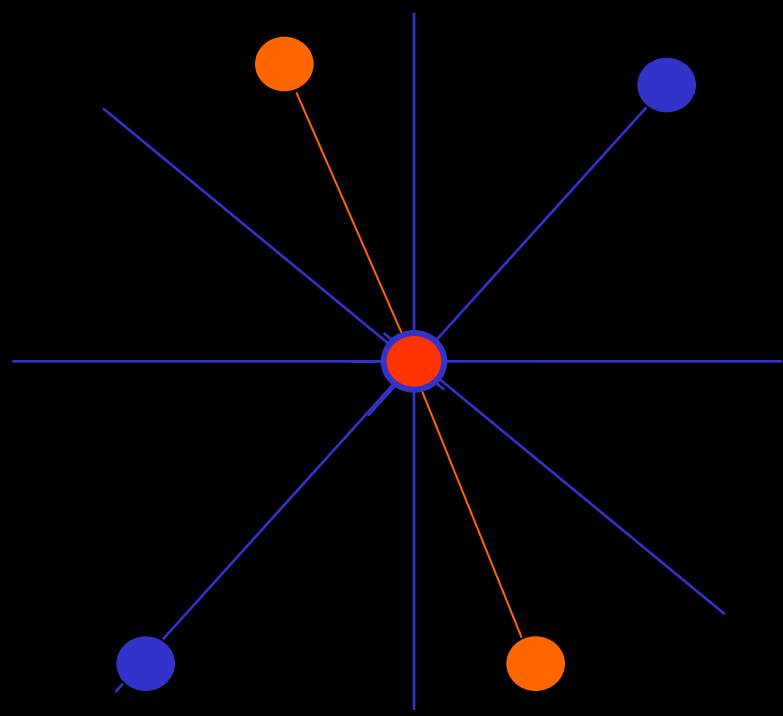
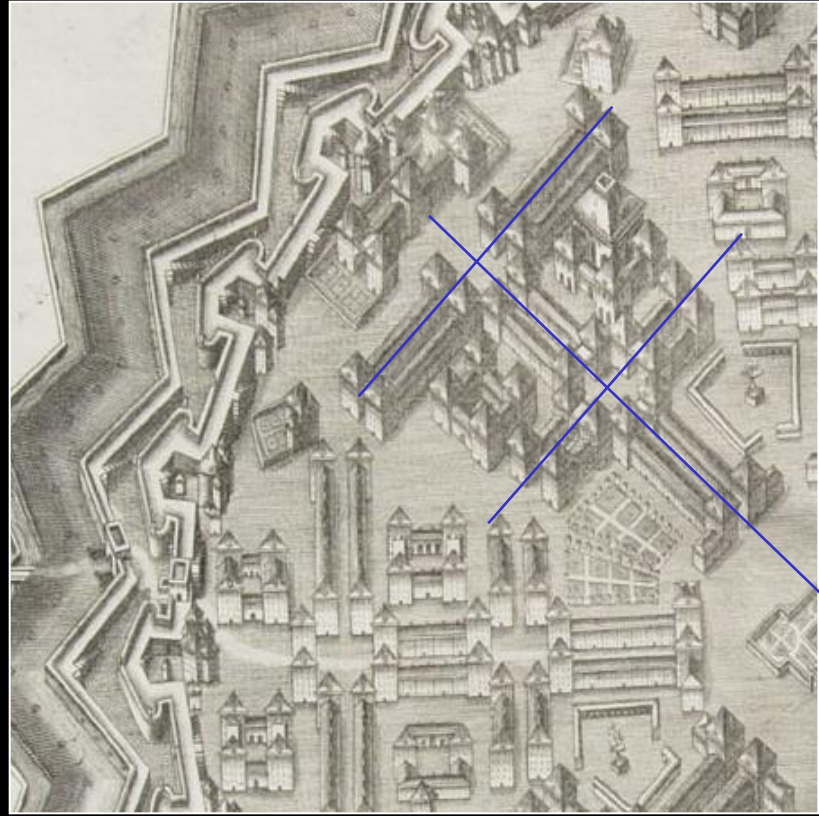
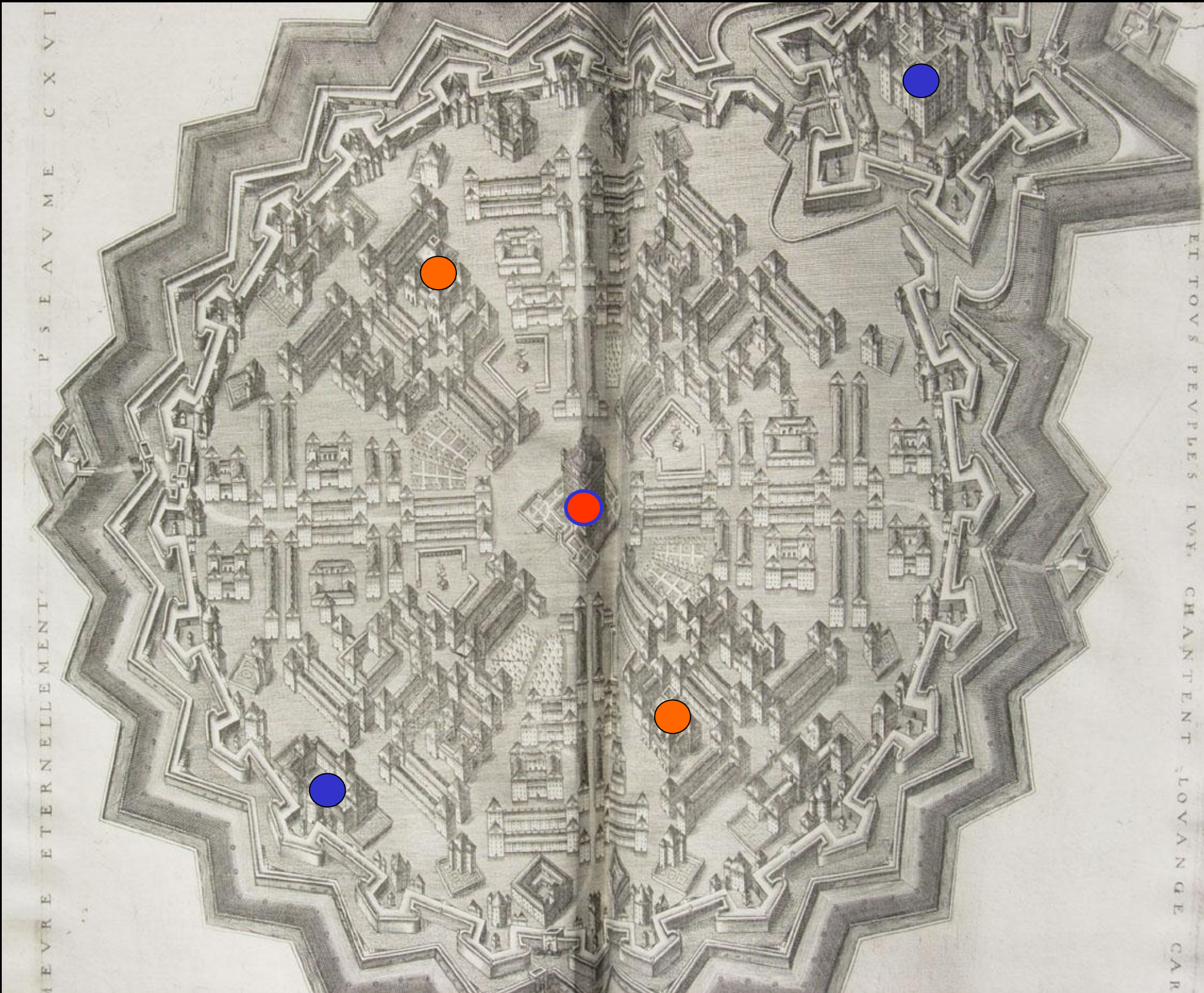








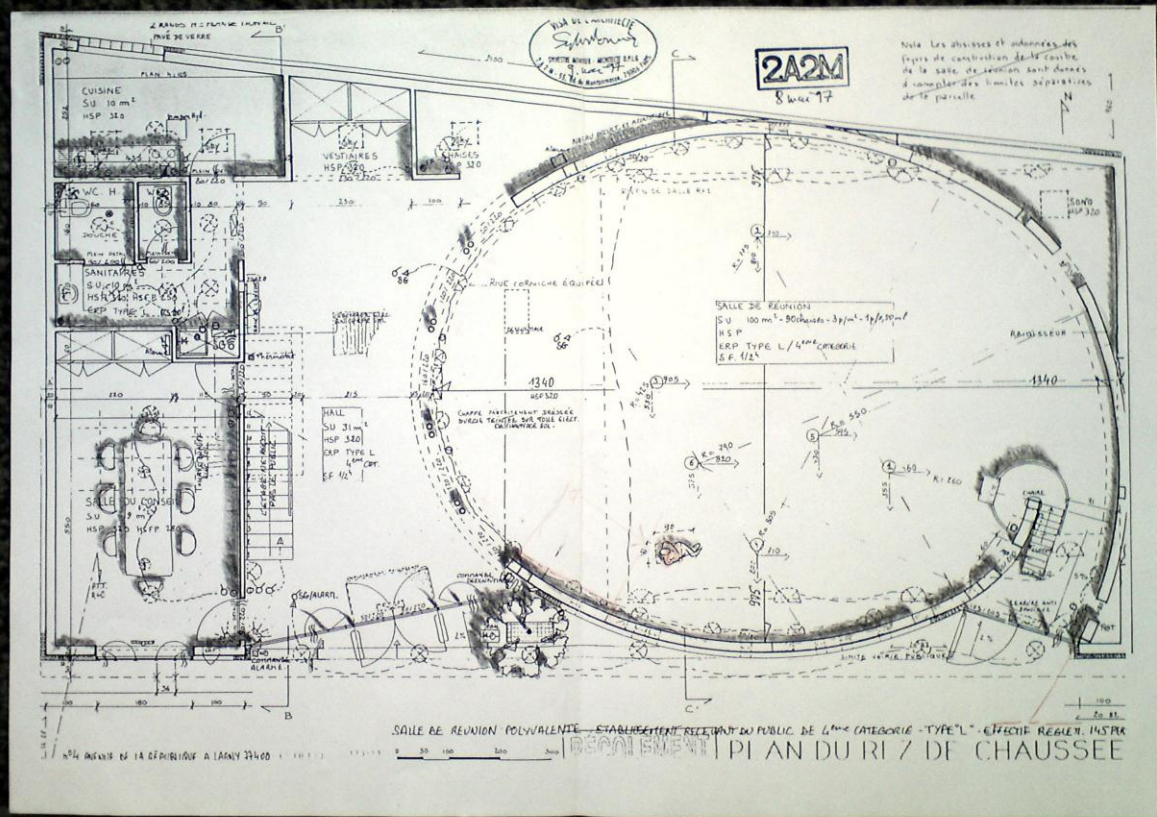




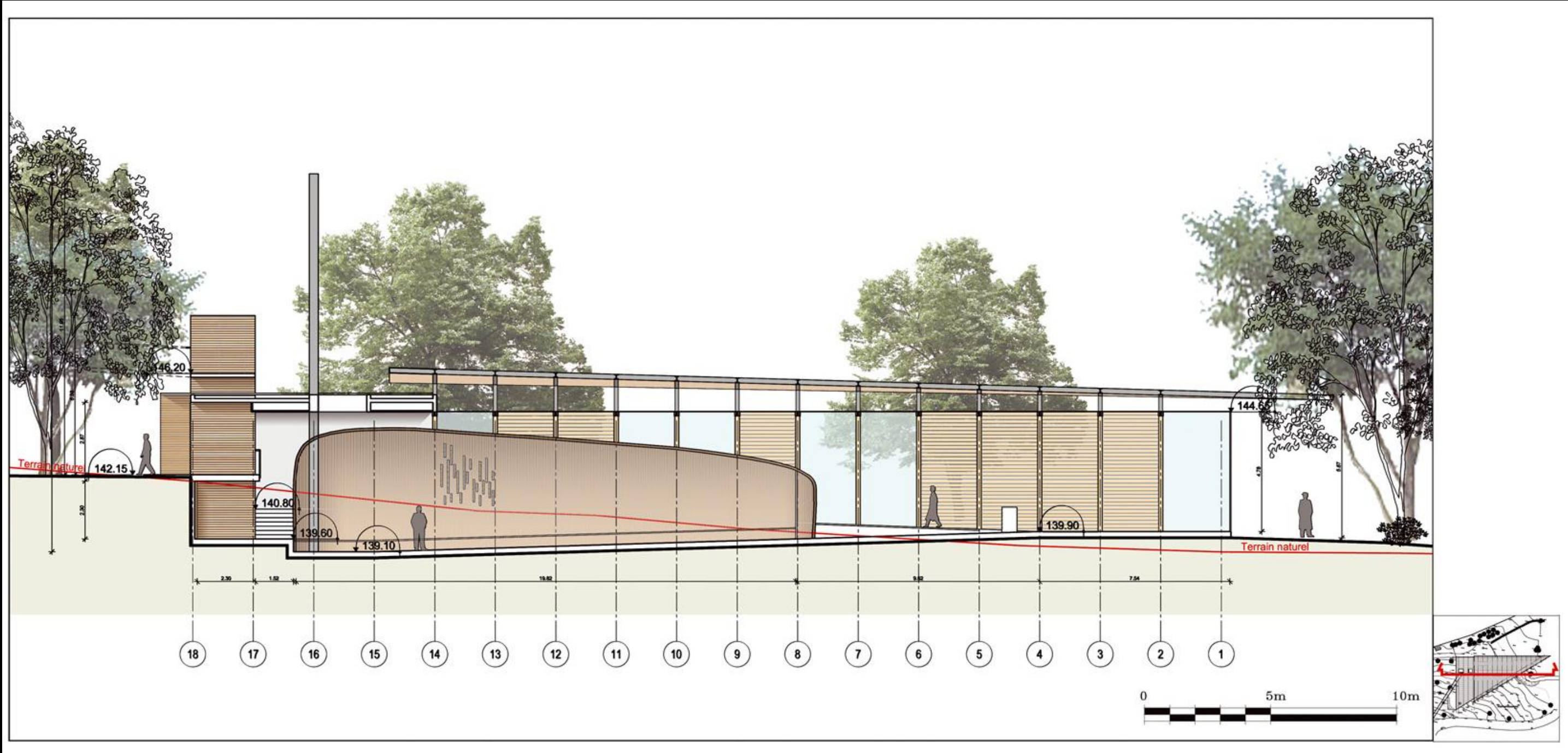


Lagny sur Marne
TEMPLE EPUdF
Sylvestre Monnier architecte
1997





Versailles
CHAPELLE DES DIACONESSES
Architecte Marc Rolinet
2002

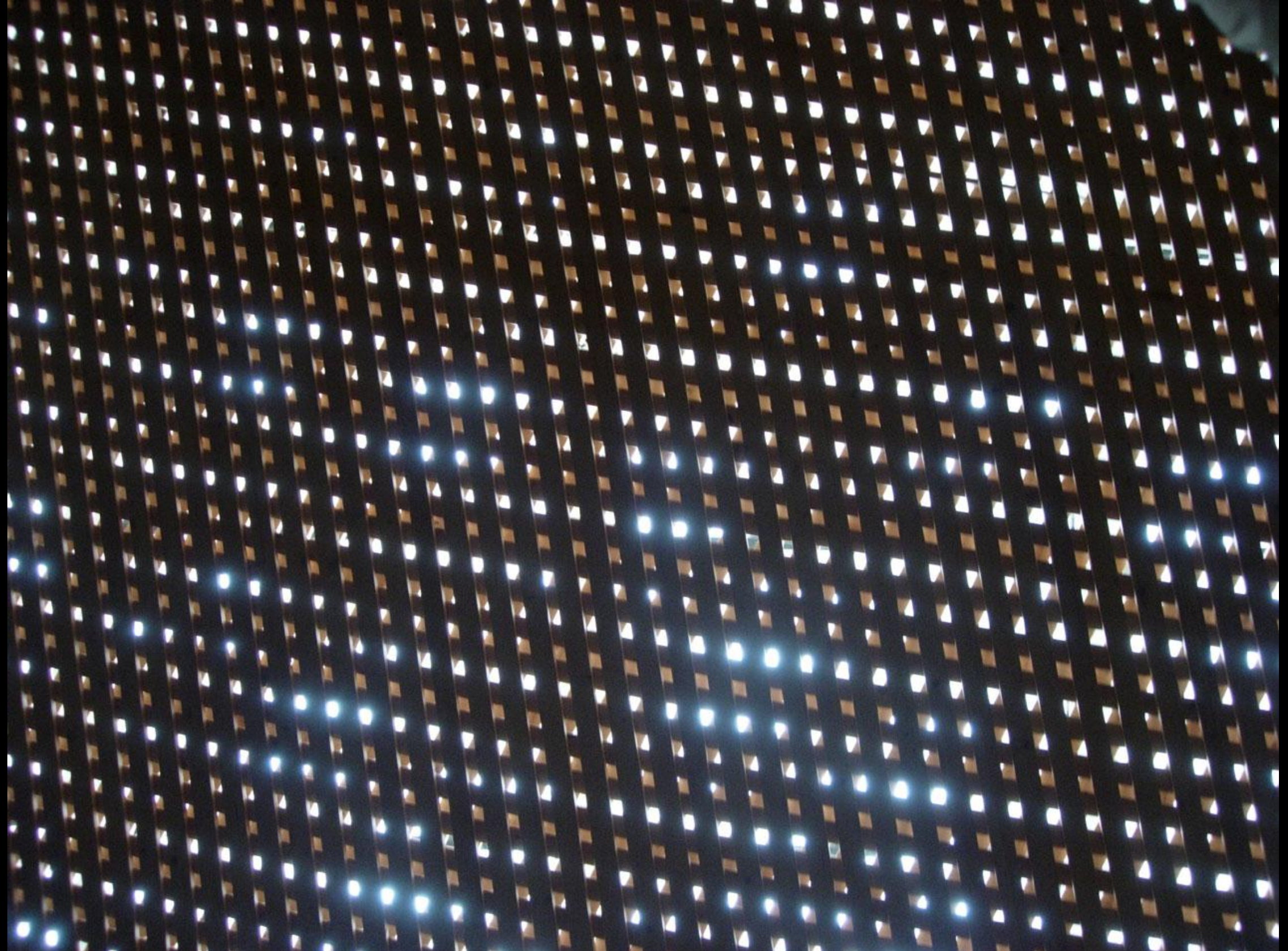
















Turku
CHAPELLE DE LA RESURRECTION
Eric Bryggman architecte
1947







